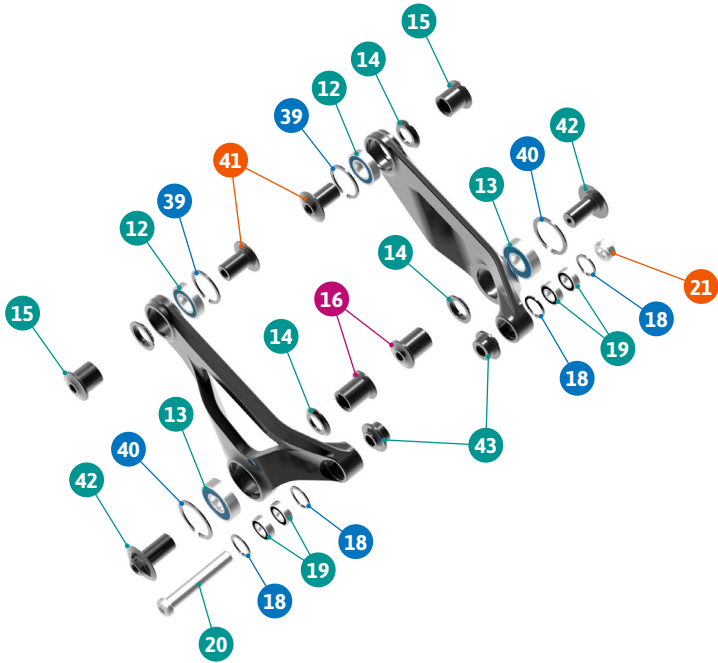


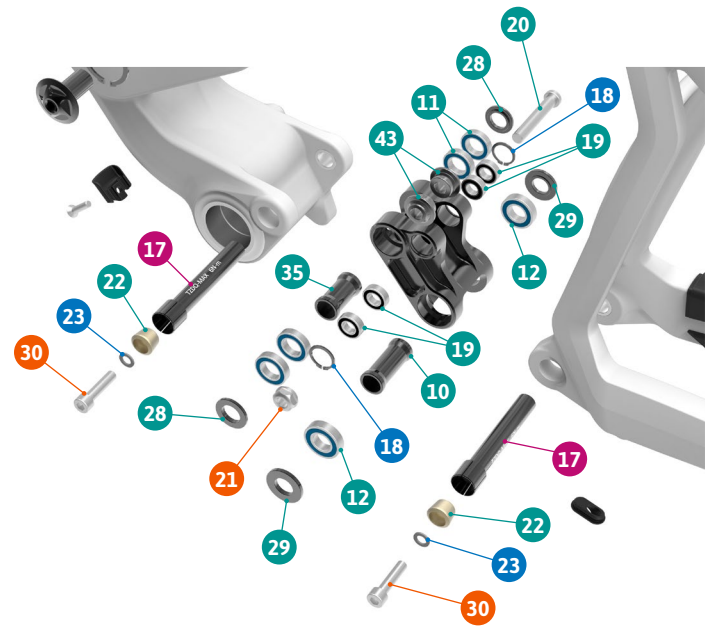
| ITEM No. | DESCRIPTION | QTY. | PART NUMBER | TORQUE |
|----------|--------------------|------|-------------|---------|
| 1 | FRONT TRIANGLE | 1 | | |
| 2 | REAR TRIANGLE | 1 | | |
| 3 | LOWER LINK | 1 | 099.15035 | |
| 4 | UPPER LINK, LEFT | 1 | | |
| 5 | UPPER LINK, RIGHT | 1 | | |
| 6 | HANGER | 1 | SET5 | |
| 7 | CHIP, LEFT | 1 | 099.15041 | |
| 8 | CHIP, RIGHT | 1 | 099.15042 | |
| 9 | HUB AXLE | 1 | 099.15036 | 10Nm |
| 10 | SPACER, 37MM | 1 | SET4 | |
| 11 | BEARING, 12X21X5 | 4 | SET1 | |
| 12 | BEARING, 12X24X6 | 4 | SET1 | |
| 13 | BEARING, 12X28X8 | 2 | SET1 | |
| 14 | SPACER, 3MM | 4 | SET3 | |
| 15 | PIVOT AXLE, 18MM | 2 | SET3 | |
| 16 | PIVOT AXLE, 18MM | 2 | SET3 | |
| 17 | PIVOT AXLE, 80.5MM | 2 | SET4 | 8Nm |
| 18 | O-RING | 6 | SET2 | |
| 19 | BEARING, 8X16X5 | 8 | SET1 | |
| 20 | SHOCK BOLT | 2 | SET2 | 10-12Nm |
| 21 | BOLT NUT | 2 | SET2 | |
| 22 | TAPER NUT | 2 | SET4 | |

| ITEM No. | DESCRIPTION | QTY. | PART NUMBER | TORQUE |
|----------|----------------------|------|-------------|--------|
| 23 | SPACER | 2 | SET4 | |
| 24 | SCREW BOLT | 3 | | 6Nm |
| 25 | HS ADAPTOR, 0 DEGREE | 2 | | |
| 26 | DISC MOUNT | 1 | 099.15030 | |
| 27 | SCREW | 2 | | 8Nm |
| 28 | SPACER, 3MM | 2 | SET4 | |
| 29 | SPACER, 3MM | 2 | SET4 | |
| 30 | SCREW BOLT | 2 | SET4 | 10Nm |
| 31 | SEAT CLAMP | 1 | 099.15031 | |
| 32 | FORK BUMPER | 2 | 099.15039 | |
| 33 | CABLE HOLDER | 1 | 099.15012 | |
| 34 | CABLE RUBBER | 4 | 989.13010 | |
| 35 | SPACER, 29MM | 1 | SET4 | |
| 36 | SCREW BOLT | 1 | | |
| 37 | CHAIN PROTECTOR | 1 | 099.15107 | |
| 38 | SCREW BOLT | 3 | | 3Nm |
| 39 | C-RING | 2 | SET3 | |
| 40 | C-RING | 2 | SET3 | |
| 41 | PIVOT AXLE, M12 | 2 | SET3 | 11Nm |
| 42 | PIVOT AXLE | 2 | SET3 | 11Nm |
| 43 | SHOCK SPACER | 4 | SET2 | |

DETAIL 01



DETAIL 02



SET 1

ZERO BEARING KIT 10



SET 2

SHOCK HARDWARE ZERO 7



SET 3

UPPER LINK HARDWARE KIT 22



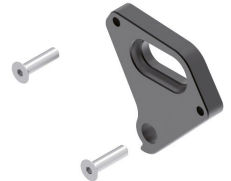
SET 4

LOWER LINK HARDWARE KIT 15



SET 5

HANGER M063



| PART NUMBER | DESCRIPTION | COMPONENTS |
|-------------|---|---|
| 099.15500 | SET 1: ZERO BEARING KIT 10 | TAPER NUT (x2) / BEARING 688-RS (INT. 8MM. EXT 16MM) (x8) / BEARING 6901V-2RS (INT. 12MM. EXT 24MM) (x4) / BEARING 6801V-2RS (INT. 12MM. EXT 21MM) (x4) |
| 099.13104 | SET 2: SHOCK HARDWARE ZERO 7 | O-RING (x6) / SHOCK SPACER (x4) / SHOCK BOLT M8 (x2) / BOLT NUT M8 (x2) |
| 099.18113 | SET 3: UPPER LINK HARDWARE KIT 22 ONLY FOR 2018 MODELS OR OLDER MODELS WITH UPPER LINK UPGRADE KIT WITH CIRCLIPS (099.17109) | SPACER, 3MM (x4) / PIVOT AXLE, 18MM (x2) / PIVOT AXLE, 18MM (x2) / C-RING (x2) / C-RING (x2) / PIVOT AXLE, M12 (x2) / PIVOT AXLE (x2) |
| 099.17109 | UPPER LINK UPGRADE KIT FOR 2015/2016/2017 MODELS | UPPER LINK, LEFT, ANODIZED BLACK (x1) / UPPER LINK, RIGHT, ANODIZED BLACK (x1) / PIVOT AXLE, M12 (x2) / PIVOT AXLE, M12 (x2) / O-RING 24 (x2) / O-RING 28 (x2) |
| 099.15502 | SET 4: LOWER LINK KIT 15 | PIVOT AXLE 80.5MM (x2) / SPACER D x37 (x1) / SPACER D x3(x2) / SPACER D x3 (x2) / SPACER D x (x2) / TAPER NUT (x2) / SPACER D x29 (x1) / M6x25L-P-S SCREW BOLT (x2) |
| 099.00046 | SET 5: HANGER M063 | HANGER (x1) / SCREW BOLT (x2) |