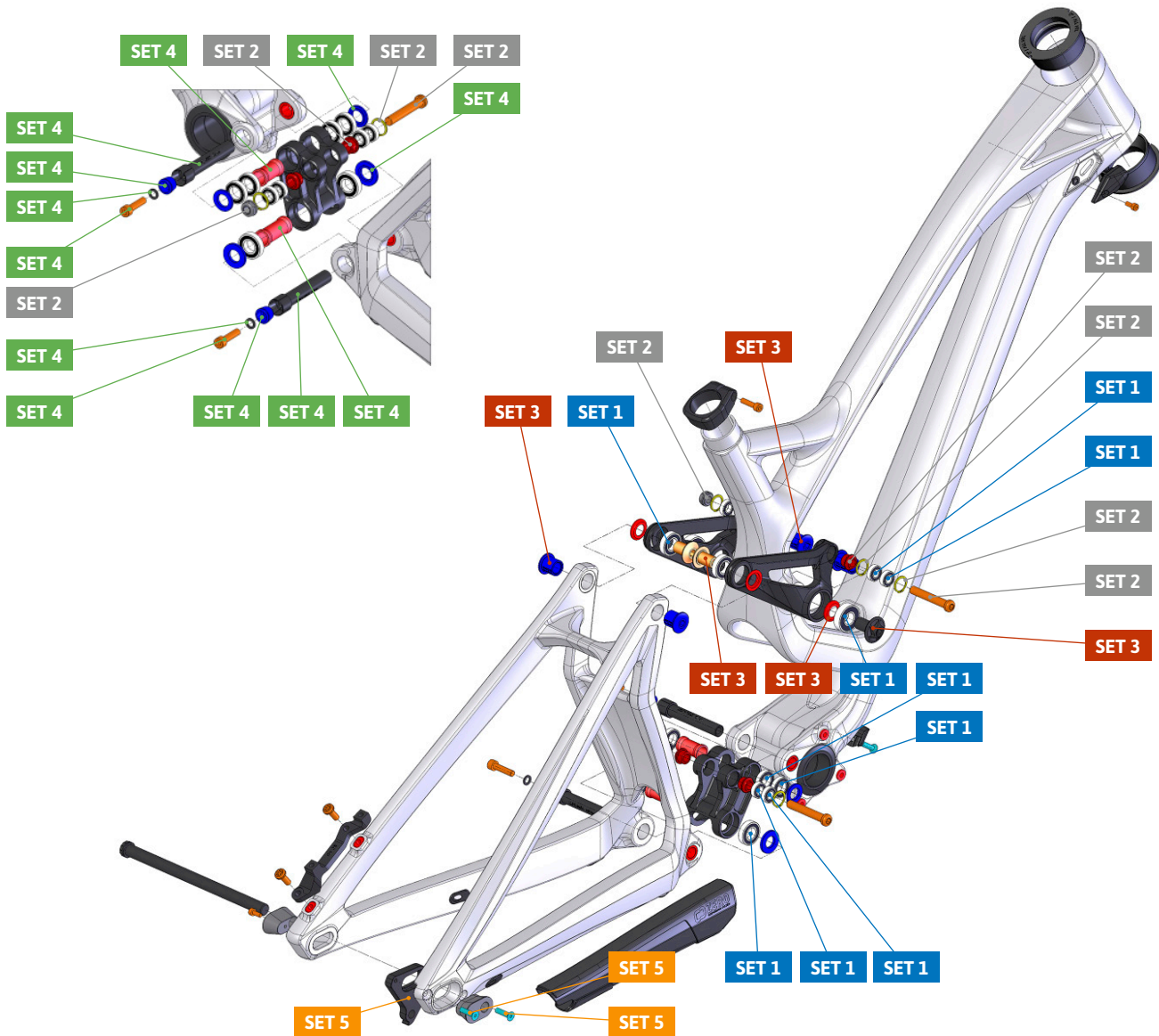


ITEM No.	DESCRIPTION	QTY.	PART NUMBER	TORQUE
1	LOWER LINK	1	099.15035	
2	UPPER LINK, LEFT	1	099.15033	
3	UPPER LINK, RIGHT	1	099.15034	
4	HANGER M063	1	SET 5	
5	CHIP, LEFT	1	099.15041	
6	CHIP, RIGHT	1	099.15042	
7	HUB AXLE	1	099.15036	10Nm
8	SPACER, 37mm	1	SET 4	
9	BEARING 6801V-2RS	4	SET 1	
10	BEARING 6901V-2RS	4	SET 1	
11	BEARING 6001V-2RS	2	SET 1	
12	SPACER, 3mm	4	SET 3	
13	PIVOT AXLE, 18mm	2	SET 3	
14	PIVOT AXLE, 22mm	2	SET 3	
15	PIVOT AXLE, 80.5mm	2	SET 4	8Nm
16	PIVOT AXLE, M12	2	SET 3	11Nm
17	PIVOT AXLE, M12	2	SET 3	11Nm
18	O-RING	6	SET 2	
19	BEARING, 688-RS	8	SET 1	
20	SHOCK SPACER	4	SET 2	

ITEM No.	DESCRIPTION	QTY.	PART NUMBER	TORQUE
21	SHOCK BOLT	2	SET 2	10-12Nm
22	BOLT NUT	2	SET 2	
23	TAPER NUT	2	SET 4	
24	SPACER	2	SET 4	
25	SCREW BOLT	3		5Nm
26	HS ADAPTOR, 0°	2		
27	DISC MOUNT	1	099.15030	
28	SCREW	2		8Nm
29	SPACER, 3mm	2	SET 4	
30	SPACER, 3mm	2	SET 4	
31	SCREW BOLT	2	SET 4	10Nm
32	SEAT CLAMP	1	099.15031	
33	FORK BUMPER	2	099.15039	
34	CABLE HOLDER	1	099.15012	
35	SCREW BOLT	3		3Nm
36	CABLE RUBBER	4	989.13010	
37	SPACER, 29mm	1	SET 4	
38	SCREW BOLT	1		5Nm
39	CHAIN PROTECTOR	1	099.15107	



PART NUMBER	DESCRIPTION	COMPONENTS
099.15500	SET 1: ZERO BEARING KIT 10	BEARING 6001V-2RS (INT. 12mm. EXT 28mm) (x2) / BEARING 688-RS (INT. 8mm. EXT 16mm) (x8) / BEARING 6901V-2RS (INT. 12mm. EXT 24mm) (x4) / BEARING 6801V-2RS (INT. 12mm. EXT 21mm) (x4)
099.13104	SET 2: SHOCK HARDWARE ZERO 7	O-RING (x6) / SHOCK SPACER (x4) / SHOCK BOLT M8 (x2) / BOLT NUT M8 (x2)
099.15501	SET 3: UPPER LINK HARDWARE KIT 15	PIVOT AXLE 18mm (x2) / PIVOT AXLE 22mm (x2) / PIVOT AXLE M12x (x2) / PIVOT AXLE M12x (x2) / SPACER D x3 (x4)
099.15502	SET 4: LOWER LINK HARDWARE KIT 15	PIVOT AXLE 80.5mm (x2) / SPACER D x37 (x1) / SPACER D x3 (x2) / SPACER D x3 (x2) / SPACER D x (x2) / TAPER NUT (x2) / SPACER D x29 (x1) / M6x25L-P-S SCREW BOLT (x2)
099.00046	SET 5: HANGER M063	HANGER M063 (x1) + M5x20L-M-S SCREW BOLT (x2)
099.15503	GEOMETRY KIT SUMMUM C	DISC MOUNT 450 (x1) / DISC MOUNT 455 (x1) / DISC MOUNT 460 (x1) / CHIP, LEFT 450/455 (x1) / CHIP, RIGHT 450/455 (x1) / HS ADAPTOR 1° (x2) / HS ADAPTOR 2° (x2)