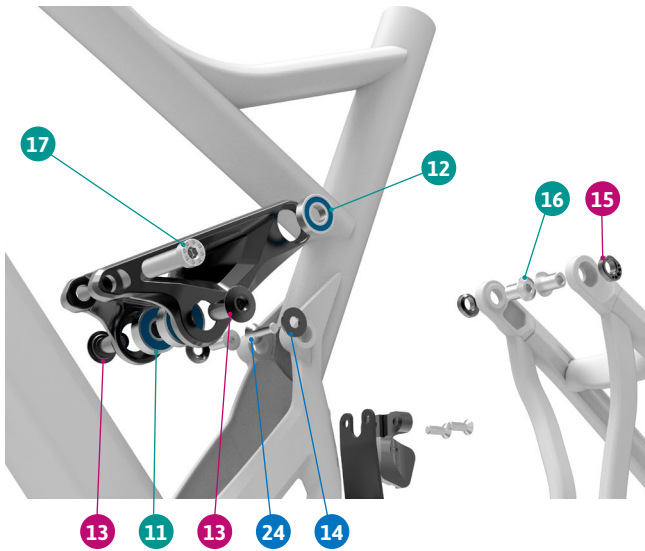


● Grease
● Sealant
● Grease + Sealant
 Apply grease to the shaft,
 and sealant to the threads

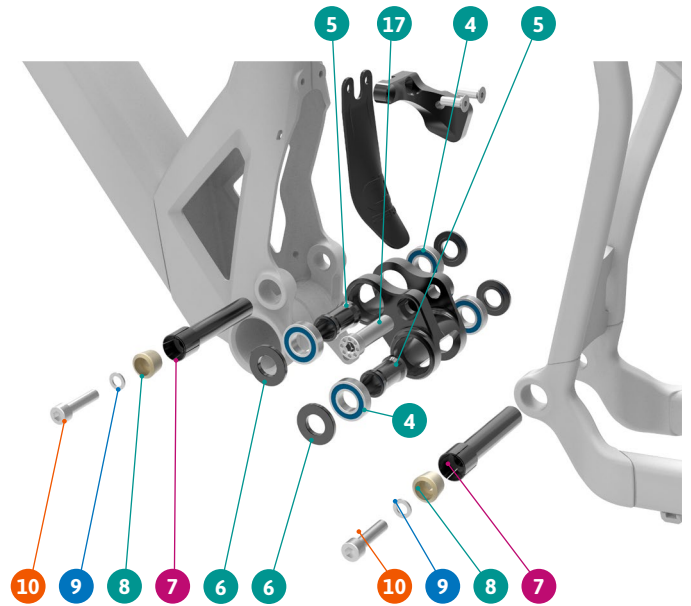
ITEM No.	DESCRIPTION	QTY.	PART NUMBER	TORQUE
1	LOWER LINK	1		
2	UPPER LINK, LEFT	1		
3	UPPER LINK, RIGHT	1		
4	BEARING 6901V-2RS	4	SET 1	
5	SPACER, 27mm	2	SET 4	
6	SPACER, 3mm	4	SET 4	
7	PIVOT AXLE	2	SET 4	8Nm
8	TAPER NUT	2	SET 4	
9	SPACER 1mm	2	SET 4	
10	SCREW BOLT M6X25	2	SET 4	10Nm
11	BEARING 6000-2RS	2	SET 1	
12	BEARING 6900-2RS	2	SET 1	

ITEM No.	DESCRIPTION	QTY.	PART NUMBER	TORQUE
13	PIVOT AXLE	2	SET 3	10Nm
14	BEARING CAP	2	SET 3	
15	AXLE NUT	2	SET 3	
16	PIVOT AXLE	2	SET 3	11Nm
17	SLEEVE BOLT	2	SET 2	12Nm
18	HANGER M066	1	SET 5	
19	HANGER NUTJ6	1	SET 5	4Nm
20	SCREW BOLT	1	SET 5	3Nm
21	SHOCK FENDER	1	099.14000	
22	FD HOLDER	1	099.17006	
23	SCREW BOLT M5X15	2		3-5Nm
24	SCREW BOLT M6X20	2	SET 3	

DETAIL 01



DETAIL 02



SET 1

ZERO BEARING KIT 12



SET 2

SHOCK HARDWARE ZERO 1



SET 3

UPPER LINK KIT 18



SET 4

LOWER LINK KIT 18



SET 5

HANGER M066



PART NUMBER	DESCRIPTION	COMPONENTS
099.16111	SET 1: ZERO BEARING KIT 12	BEARING 6900-RS (INT. 10mm. EXT 22mm) (x2) / BEARING 6000-2RS (INT. 10mm. EXT 26mm) (x2) / BEARING 6901V-2RS (INT. 12mm. EXT 24mm) (x4)
099.12002	SET 2: SHOCK HARDWARE ZERO 1	BOLT M10x36 (x2)
099.16112	SET 3: UPPER LINK KIT 18	PIVOT AXLE (x2) / BEARING CAP (x2) / AXLE NUT M10x5,75 (x2) / PIVOT AXLE M10x15 (x2) / M6x20L-M SCREW BOLT (x2)
099.16113	SET 4: LOWER LINK KIT 18	SPACER D16xD12x27 (x2) / SPACER D23.5xD12x3mm (x4) / PIVOT AXLE M12X70.5mm (x2) / SPACER D10XD6X1mm (x2) / TAPER NUT 10.5mm (x2) / M6x25L-P-S SCREW BOLT (x2)
099.00053	SET 5: HANGER M066	HANGER M066 (x1) / HANGER NUT (x1) / SCREW BOLT (x1)