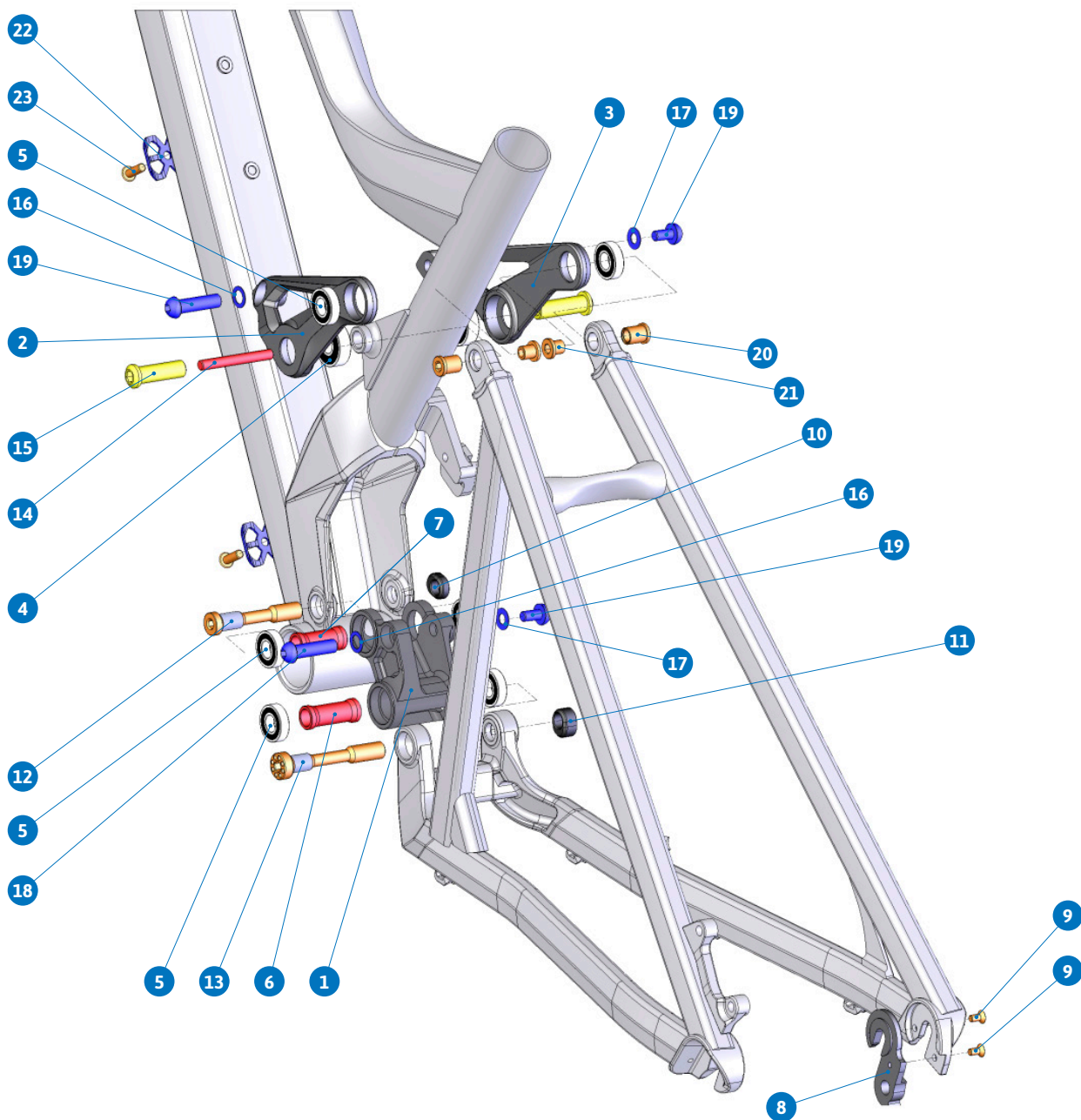


SPARE PARTS
FACTOR

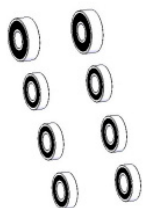


ITEM No.	DESCRIPTION	QTY.
1	LOWER LINK	1
2 - 3	UPPER LINK	1
4	BEARING 6000-2RS	2
5	BEARING 6900-RS	6
6	SPACER D14x35	1
7	SPACER D14x32	1
8	HANGER M053	1
9	SCREW BOLT M4x8L-M	2
10	AXLE NUT M10x5,75	1
11	AXLE NUT M10x8,85	1
12	PIVOT AXLE M10x55	1

ITEM No.	DESCRIPTION	QTY.
13	PIVOT AXLE M10x63	1
14	SCREW AXLE M6x40	1
15	PIVOT AXLE M10x33	2
16	WASHER M8	2
17	WASHER M6	2
18	SLEEVE BOLT D8x30L	2
19	SCREW BOLT M6XL12	2
20	NUT D10xL11,5	2
21	NUT M8x8,5	2
22	CABLE HOLDER	3
23	SCREW BOLT	3

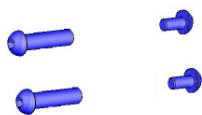
SET 1

ZERO BEARING KIT



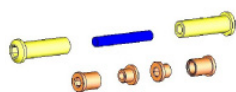
SET 2

SHOCK HARDWARE KIT 3



SET 3

UPPER LINK KIT 5



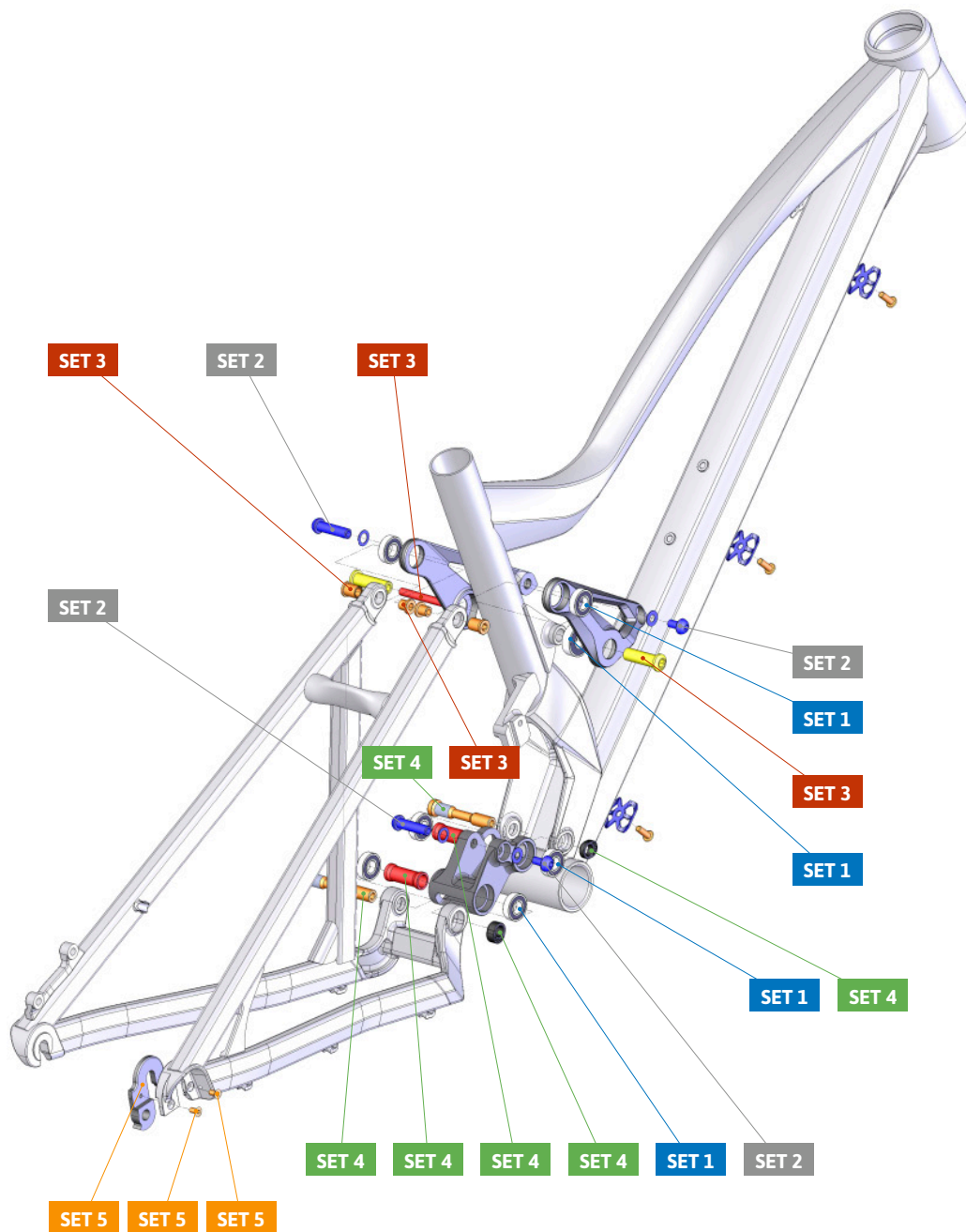
SET 4

LOWER LINK KIT 10



SET 5

HANGER KIT 10



PART NUMBER	DESCRIPTION	COMPONENTS
099.12001	SET 1: ZERO BEARING KIT	BEARING 6900-RS (x6) / BEARING 6000-2RS (x2)
099.12023	SET 2: SHOCK HARDWARE KIT 3	SLEEVE BOLT D8x30L (x2) / SCREW BOLT M6xL12 (x2)
099.12021	SET 3: UPPER LINK KIT 5	SCREW AXLE M6x40 (x1) / PIVOT AXLE M10x33 (x2) / NUT D10xL11.5 (x2) / NUT M8x8.5 (x2)
099.13102	SET 4: LOWER LINK KIT 10	PIVOT AXLE M10x63 (x1) / AXLE NUT M10x8.85 (x1) / AXLE NUT M10x5.75 (x1) / SPACER D14x35 (x1) / SPACER D14x32 (x1) / PIVOT AXLE M10x55 (x1)
099.13109	SET 5: HANGER KIT 10	HANGER M053 (x1) / M4x8L-M SCREW BOLT (x2)