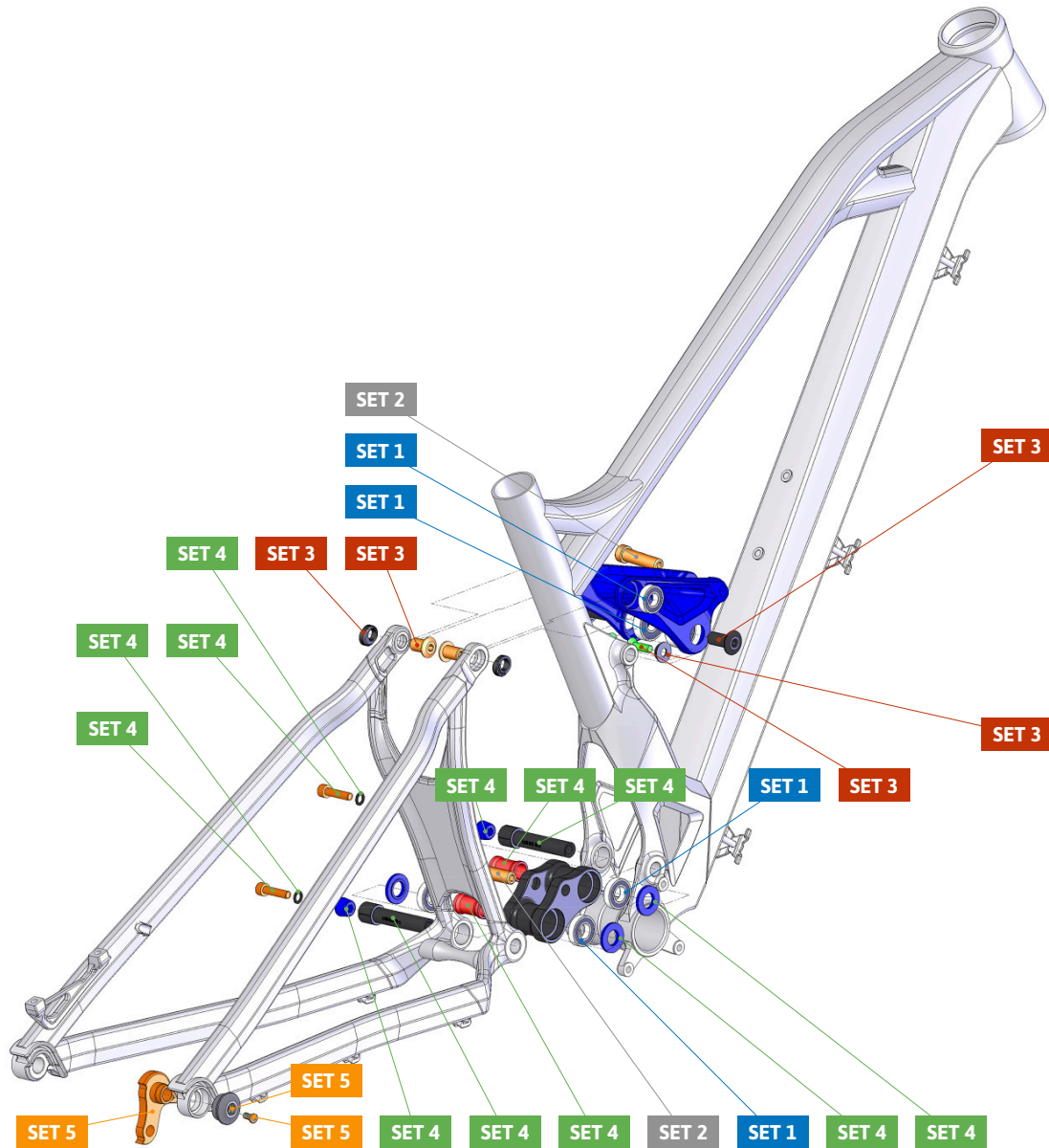


| ITEM No. | DESCRIPTION        | QTY. | PART NUMBER | TORQUE |
|----------|--------------------|------|-------------|--------|
| 1        | LOWER LINK         | 1    |             |        |
| 2        | UPPER LINK, LEFT   | 1    |             |        |
| 3        | UPPER LINK, RIGHT  | 1    |             |        |
| 4        | SPACER, 27mm       | 2    | SET 4       |        |
| 5        | BEARING 6901V-2RS  | 4    | SET 1       |        |
| 6        | SPACER, 3mm        | 4    | SET 4       |        |
| 7        | PIVOT AXLE, 70.5mm | 2    | SET 4       | 8Nm    |
| 8        | TAPER NUT          | 2    | SET 4       |        |
| 9        | SPACER             | 2    | SET 4       |        |
| 10       | SCREW BOLT         | 2    | SET 4       | 10Nm   |
| 11       | BEARING 6000-2RS   | 2    | SET 1       |        |

| ITEM No. | DESCRIPTION      | QTY. | PART NUMBER | TORQUE |
|----------|------------------|------|-------------|--------|
| 12       | BEARING 6900-RS  | 2    | SET 1       |        |
| 13       | AXLE NUT         | 2    | SET 3       |        |
| 14       | PIVOT AXLE       | 2    | SET 3       | 5Nm    |
| 15       | HANGER M066      | 1    | SET 5       |        |
| 16       | HANGER NUT       | 1    | SET 5       | 4Nm    |
| 17       | SCREW BOLT       | 1    | SET 5       | 3Nm    |
| 18       | CABLE GUIDE      | 3    | 099.16022   | 3Nm    |
| 19       | SLEEVE BOLT      | 2    | SET 2       | 8Nm    |
| 20       | LINK AXLE        | 2    | SET 3       | 10Nm   |
| 21       | BEARING CAP      | 2    | SET 3       |        |
| 22       | SCREW BOLT M6X20 | 2    | SET 3       |        |



| PART NUMBER | DESCRIPTION                  | COMPONENTS  |
|-------------|------------------------------|---|
| 099.16111   | SET 1: ZERO BEARING KIT 12   | BEARING 6900-RS (INT. 10mm. EXT 22mm) (x2) / BEARING 6000-2RS (INT. 10mm. EXT 26mm) (x2) / BEARING 6901V-2RS (INT. 12mm. EXT 24mm) (x4)                     |
| 099.12002   | SET 2: SHOCK HARDWARE ZERO 1 | BOLT M10x36 (x2)  |
| 099.16112   | SET 3: UPPER LINK KIT 18     | PIVOT AXLE M10x15 (x2) / AXLE NUT M10x5,75 (x2) / LINK AXLE (x2) / BEARING CAP (x2) / M6x20L-M SCREW BOLT (x2)  |
| 099.16113   | SET 4: LOWER LINK KIT 18     | SPACER D16xD12x27 (x2) / SPACER D23.5xD12x3mm (x4) / PIVOT AXLE M12X70.5mm (x2) / SPACER D10XD6X1mm (x2) / TAPER NUT 10.5mm (x2) M6x25L-P-S SCREW BOLT (x2) |
| 099.00053   | HANGER M066 + NUT            | HANGER M066 (x1) / HANGER NUT (x1) / SCREW BOLT (x1)  |