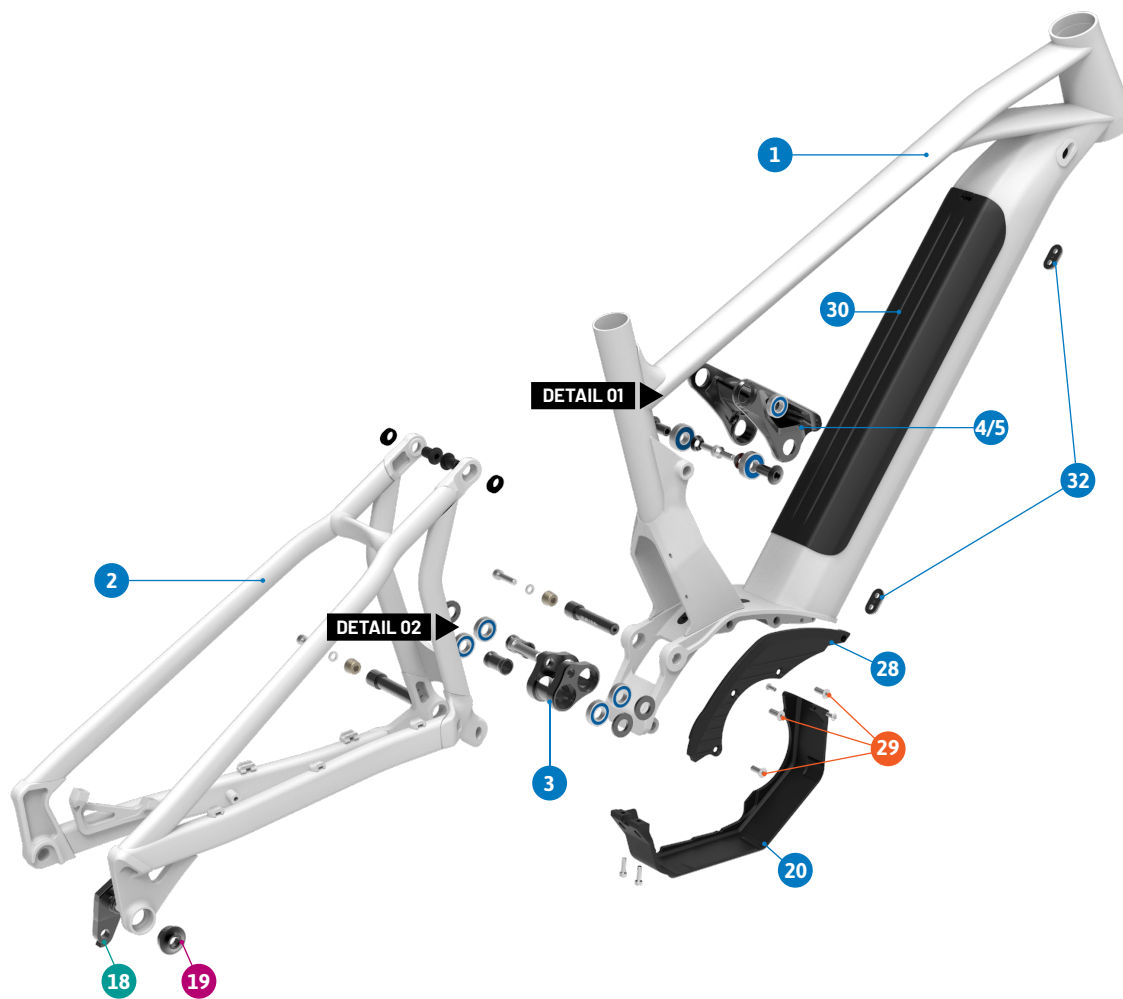


CHASER +

Spare Parts



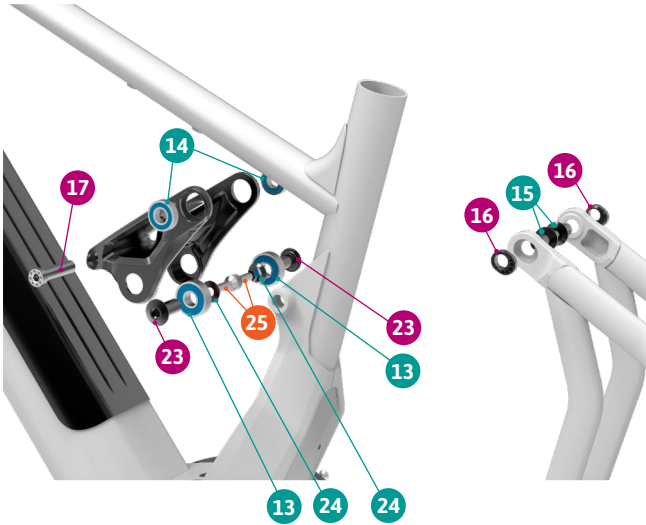
- Grease
- Sealant
- Grease + Sealant

Apply grease to the shaft,
and sealant to the threads

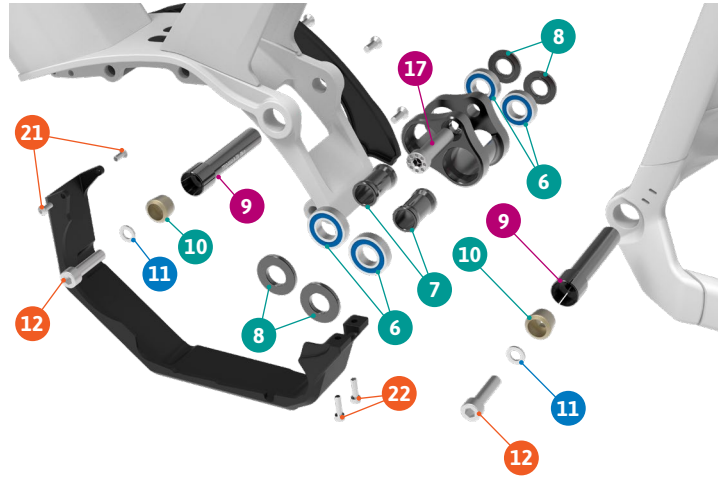
ITEM No.	DESCRIPTION	QTY.	PART NUMBER	TORQUE
1	FRONT TRIANGLE	1		
2	REAR TRIANGLE	1		
3	LOWER LINK	1		
4	UPPER LINK, LEFT	1		
5	UPPER LINK, RIGHT	1		
6	BEARING, 12X24X6	4	SET 1	
7	SPACER, 27MM	2	SET 4	
8	SPACER, 3MM	4	SET 4	
9	PIVOT AXLE, 70.5MM	2	SET 4	8 Nm
10	TAPER NUT	2	SET 4	
11	SPACER	2	SET 4	
12	SCREW BOLT M6X25	2	SET 4	10 Nm
13	BEARING, 10x26x8	2	SET 1	
14	BEARING, 10x22x6	2	SET 1	
15	PIVOT AXLE	2	SET 3	11 Nm
16	AXLE NUT	2	SET 3	

ITEM No.	DESCRIPTION	QTY.	PART NUMBER	TORQUE
17	SLEEVE BOLT	2	SET 2	16Nm
18	HANGER	1	SET 5	
19	HANGER NUT	1	099.16011	5 Nm
20	MOTOR COVER	1	099.16013	
21	SCREW BOLT M4X10	2		3 Nm
22	SCREW BOLT M4X15	2		4 Nm
23	PIVOT AXLE	2	SET 3	10 Nm
24	BEARING CAP	2	SET 3	
25	SCREW BOLT	2	SET 3	
26	SPACER	2		
27	CABLE RUBBER	3	989.13010	
28	RIGHT SIDE COVER	1	099.16017	
29	SCREW BOLT M5X15	3		3 Nm
30	BATTERY COVER	1	099.18016	
31	CABLE ADAPTOR	1		
32	BOLT COVER	2	099.18019	

DETAIL 01



DETAIL 02



SET 1	SET 2	SET 3	SET 4	SET 5
ZERO BEARING KIT 12	SHOCK HARDWARE ZERO 1	UPPER LINK KIT 18	LOWER LINK KIT 18	HANGER M067

PART NUMBER	DESCRIPTION	COMPONENTS
099.16111	SET 1: ZERO BEARING KIT 12	BEARING, 12X24X6 (x4) / BEARING, 10x26x8 (x2) / BEARING, 10x22x6 (x2)
099.12002	SET 2: SHOCK HARDWARE ZERO 1	SLEEVE BOLT (x2)
099.16112	SET 3: UPPER LINK KIT 18	PIVOT AXLE (x2) / AXLE NUT (x2) / PIVOT AXLE (x2) / BEARING CAP (x2) / SCREW BOLT (x2)
099.16113	SET 4: LOWER LINK KIT 18	SPACER D16xD12x27 (x2) / SPACER D23.5xD12x3mm (x4) / PIVOT AXLE M12X70.5mm (x2) / SPACER D10XD6X1mm (x2) / TAPER NUT 10.5mm (x2) M6x25L-P-S SCREW BOLT (x2)
099.00054	SET 5: HANGER M067	HANGER (x1), HANGER NUT (x1)
112.90022	REAR AXLE	12X148 P1.75 L180