

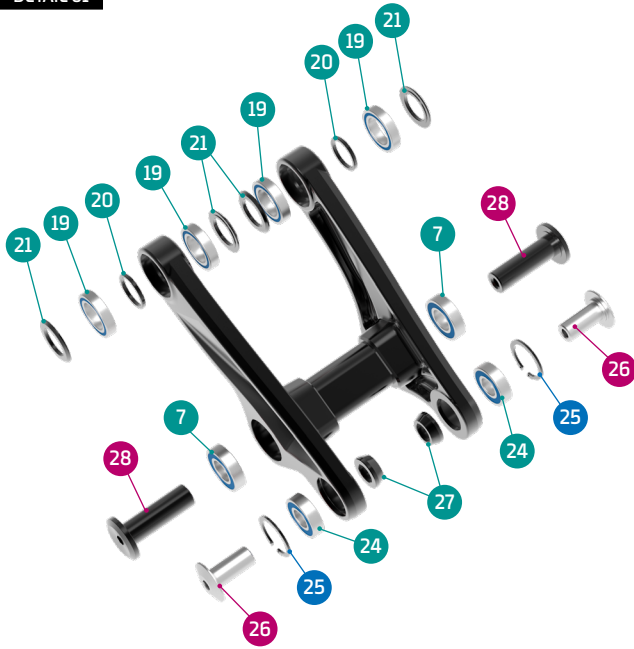
- Grease
- Threadlocker
- Grease + Threadlocker

Apply grease to the shaft, and locker to the threads

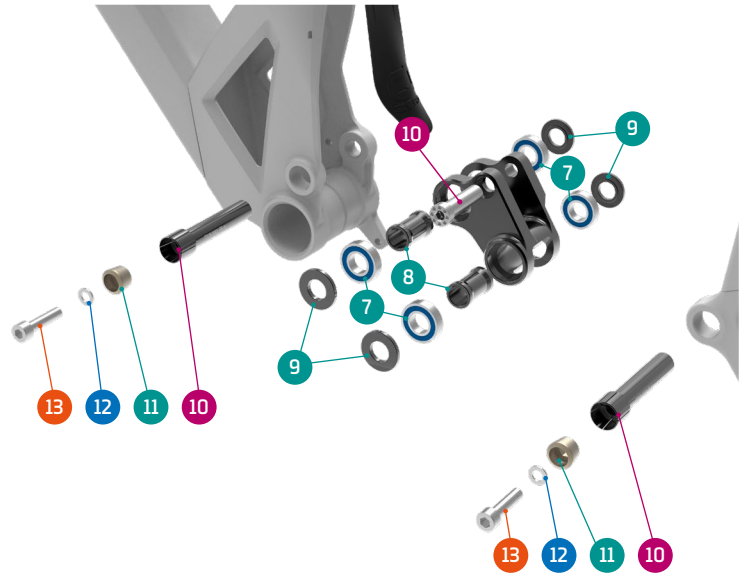
ITEM No.	DESCRIPTION	QTY.	PART NUMBER	TORQUE
1	FRONT TRIANGLE	1		
2	REAR TRIANGLE	1		
3	LOWER LINK	1		
4	UPPER LINK	1		
5	UPPER LINK	1		
6	UPPER LINK	1		
7	BEARING, 12X24X6	6	SET1	
8	SPACER, 27MM	2	SET4	
9	SPACER, 3MM	4	SET4	
10	PIVOT AXLE, 70.5MM	2	SET4	8Nm
11	TAPER NUT	2	SET4	
12	SPACER	2	SET4	
13	SCREW BOLT	2	SET4	
14	SLEEVE BOLT	1	SET2	16Nm
15	HANGER	1	SET5	
16	HANGER NUT	1	099.16011	4Nm

ITEM No.	DESCRIPTION	QTY.	PART NUMBER	TORQUE
17	SCREW BOLT	1	SET4	3Nm
18	SHOCK FENDER	1	099.14000	
19	BEARING, 24X15X5	4	SET1	
20	SPACER, 15x19x2t	2	SET3	
21	SPACER, 15x27x2	4	SET3	
22	PIVOT AXLE, 26MM	2	SET3	12Nm
23	PIVOT AXLE, M12	2	SET3	
24	BEARING, 10x22x6	2	SET1	
25	C-RING	2	SET3	
26	SHOCK BOLT	2	SET2	12Nm
27	SPACER, 10x17x6	2	SET2	
28	PIVOT AXLE	2	SET3	15Nm
29	SCREW AXLE M6x50	1	SET3	
30	WASHER, 12x18x3	2	SET3	
31	FENDER BOLTS M5x10	2		

DETAIL 01



DETAIL 02



SET 1

ZERO BEARING KIT 17



SET 2

SHOCK HARDWARE KIT 17



SET 3

UPPER LINK KIT 23



SET 4

LOWER LINK KIT 18



SET 5

HANGER M066



PART NUMBER	DESCRIPTION	COMPONENTS
099.19109	SET 1: ZERO BEARING KIT 17	BEARING 6901V-2RS, 12X24X6 (x6) / BEARING 6900V-2RS, 10x22x6 (x2) / BEARING 6802V-2RS, 24X15X5 (x4)
099.18102	SET 2: SHOCK HARDWARE ZERO 10	SPACER, 10x17x6 (x2) / SHOCK BOLT (x2) / SLEEVE BOLT (x1)
099.19006	SET 3: UPPER LINK KIT 23	C-RING (x2) SPACER, 15x19x2t (x2) SPACER, 15x27x2 (x4) PIVOT AXLE (x2) PIVOT AXLE, 26MM (x2) PIVOT AXLE, M12 (x2) SCREW AXLE (x1) WASHER, 12x18x3 (x2)
099.16113	SET 4: LOWER LINK KIT 18	SPACER D16xD12x27 (x2) / SPACER D23.5xD12x3mm (x4) / PIVOT AXLE M12X70.5mm (x2) / SPACER D10XD6X1mm (x2) / TAPER NUT 10.5mm (x2) M6x25L-P-S SCREW BOLT (x2)
099.00053	SET 5: HANGER M066	HANGER M066 (x1) / HANGER NUT (x1) / SCREW BOLT (x1)
099.19103	GEOMETRY KIT 110MM	0° CUPS +1° CUPS 110mm + ONOFF TITAN TAPPED
099.19104	GEOMETRY KIT 120MM	0° CUPS +1° CUPS 120mm + ONOFF TITAN TAPPED
099.19105	GEOMETRY KIT 130MM	0° CUPS +1° CUPS 130mm + ONOFF TITAN TAPPED
112.90022	REAR AXLE	12X148 P1.75 L180