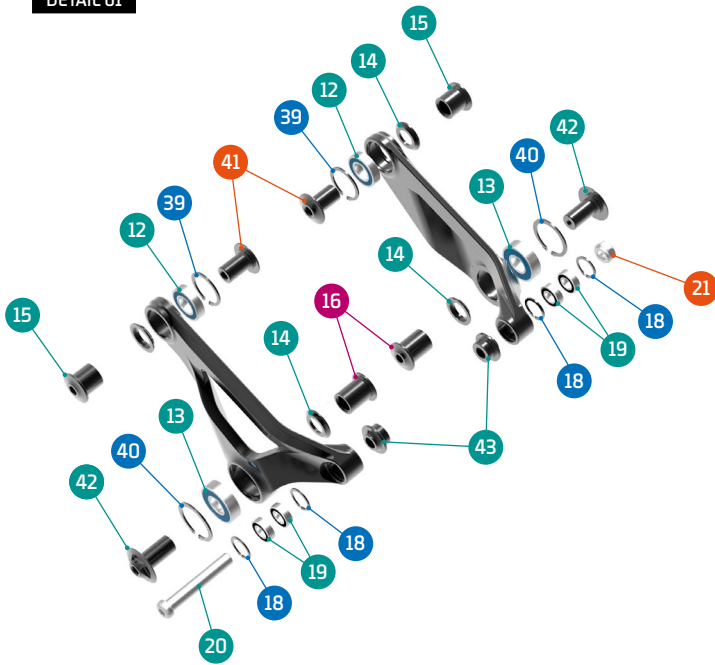
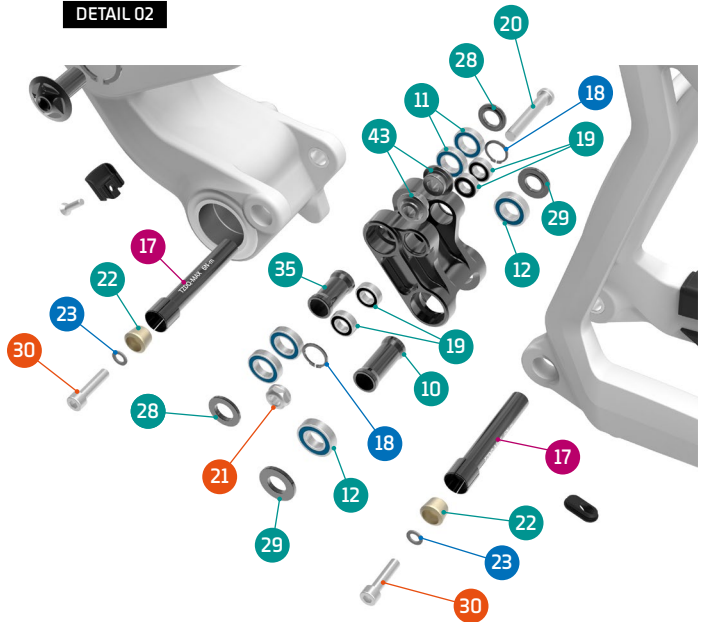


DETAIL 01



DETAIL 02



SET 1

ZERO BEARING KIT 10



SET 2

SHOCK HARDWARE ZERO 7



SET 3

UPPER LINK HARDWARE KIT 22



SET 4

LOWER LINK HARDWARE KIT 15



SET 5

HANGER M063



PART NUMBER	DESCRIPTION	COMPONENTS
099.15500	SET 1: ZERO BEARING KIT 10	TAPER NUT (x2) / BEARING 688-R5 (INT. 8MM. EXT 16MM) (x8) / BEARING 6901V-2RS (INT. 12MM. EXT 24MM) (x4) / BEARING 6801V-2RS (INT. 12MM. EXT 21MM) (x4)
099.13104	SET 2: SHOCK HARDWARE ZERO 7	O-RING (x6) / SHOCK SPACER (x4) / SHOCK BOLT M8 (x2) / BOLT NUT M8 (x2)
099.18113	SET 3: UPPER LINK HARDWARE KIT 22 ONLY FOR 2018, 2019, 2020 MODELS OR EARLY MODELS UPGATED WITH CIRCLIPS (099.17109)	SPACER, 3MM (x4) / PIVOT AXLE, 18MM (x2) / PIVOT AXLE, 18MM (x2) / C-RING (x2) / C-RING (x2) / PIVOT AXLE, M12 (x2) / PIVOT AXLE (x2)
099.17109	UPPER LINK UPGRADE KIT FOR 2015/2016/2017 MODELS	UPPER LINK, LEFT, ANODIZED BLACK (x1) / UPPER LINK, RIGHT, ANODIZED BLACK (x1) / PIVOT AXLE, M12 (x2) / PIVOT AXLE, M12 (x2) / O-RING 24 (x2) / O-RING 28 (x2)
099.15502	SET 4: LOWER LINK KIT 15	PIVOT AXLE 80.5MM (x2) / SPACER D x37 (x1) / SPACER D x3(x2) / SPACER D x3 (x2) / SPACER D x (x2) / TAPER NUT (x2) / SPACER D x29 (x1) / M6x25L-P-S SCREW BOLT (x2)
099.00046	SET 5: HANGER M063	HANGER (x1) / SCREW BOLT (x2)
099.15106	DT SUMMUM CARBON LEATHER PROTECTOR+CLEAR DT+CLEAR YOKE	